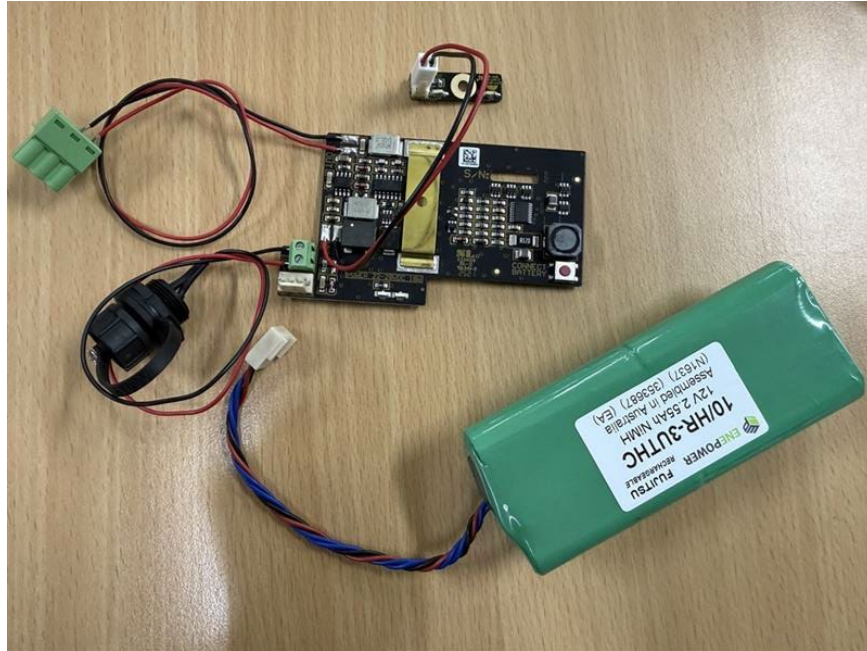


X320 Battery Accessory Guide

When replacing the internal charging board on an X320 ensure all connections are made before plugging in external charging pack. See below image for connections from charging PCBA to back of X320 indicator.

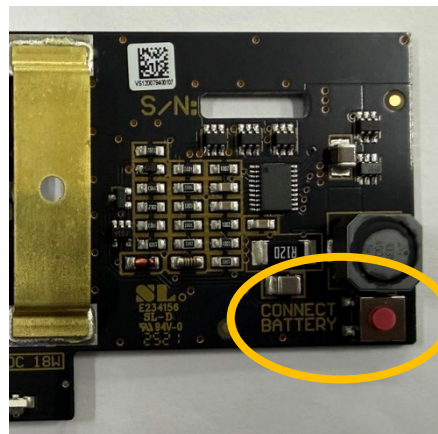


The charging board has an onboard LED that will illuminate red or green depending on charge state.

- Green = fully charged
- Red = charging

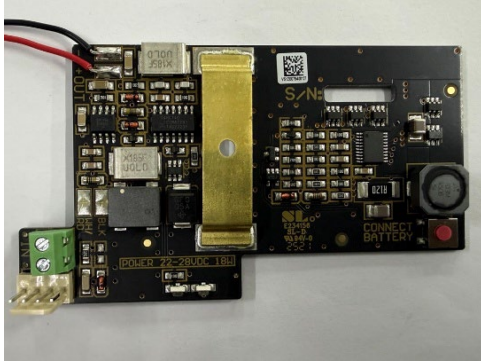
If these charge indicators are flashing, then press the Connect Battery button on the charger board.

Upon initial installation of 4 pin connector from battery to the charging board, you may need to press the connect battery button momentarily to “learn” the new battery to the charging board.

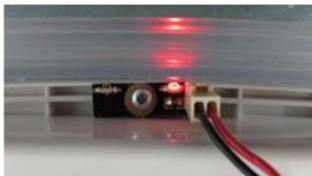


Common Part numbers:

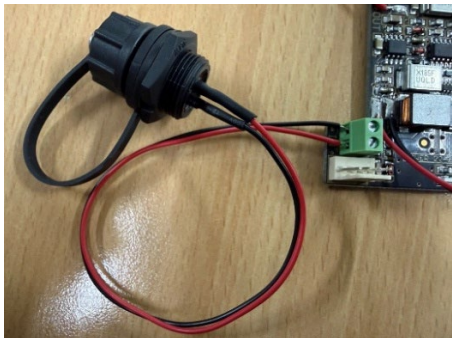
780229 Internal Charge PCBA



781097 Charge indicator PCBA

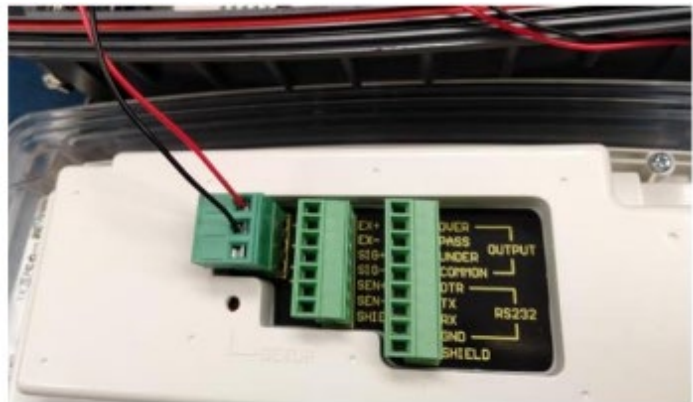
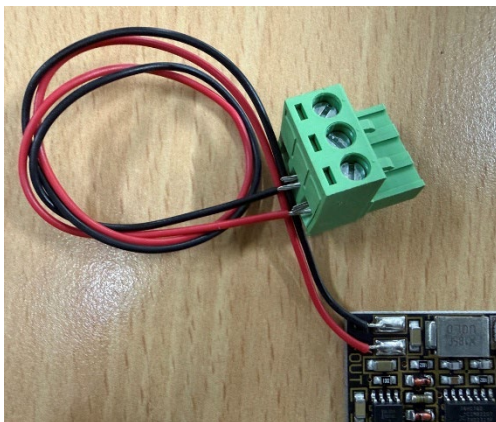


780232 Charge socket



780183 Replacement External plug pack charger for X320



780162 Replacement NiMH Pack**DC connection from Charger board to X320****Note:**

Ensure X320 battery settings allow for Auto.OFF and BAT.VLT settings so that indicator will not remain on for extended periods which can drain the rechargeable pack below the threshold voltage and then it will not be able to charge. Fully charged the pack will retain around 14 VDC, nominal voltage is around 12 VDC and fully discharged will be around 10VDC. Also to note, the 780183 charger provides 24VDC to the charging circuit while charging but the battery circuit only provides 12VDC to the indicator (regardless of charging or not charging).