

# XG Series Scales – Data Sheet



- NTEP approved – 19-147
- 304 stainless steel platter and frame assembly
- Anti slip adjustable levelling feet
- 1.5in 304 stainless tubal pole or SS front bracket option
- IP65 moisture protected Aluminum load cells
- 5 point overload protection
- Overload recording increments every time the scale is overloaded

Rinstrum XG series are sturdy, economic industrial bench scales designed for years of rugged use. Sizes range from 12in x 12in to 20in x 24in with capacities from 25lbs to 1000lbs, and NTEP approved to 5000 div non-trade to 30,000 div for industrial applications requiring higher accuracy. The scale is available in a range of different indicator mounting options, indicators, and firmware to suit the application functionality and working environment.

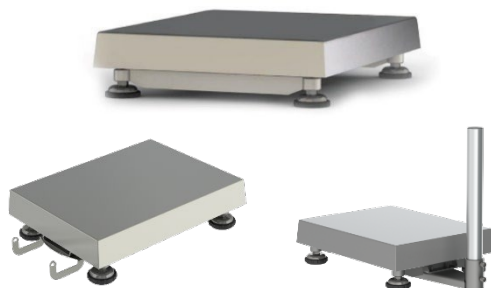
Optional M12 cables allowing for fast setup and replication of saved RIS settings via a viewer, and factory calibration make this platform series excellent for drop ship customers.

### Easy maintenance & operation

- Clear open frame – easy to keep clean
- Removable low sided pan – deflect splatter and easy cleaning
- Sturdy pan construction – no warping
- 2 Axis rotating head – for best operator viewing angle

Capacity x Resolution	12 x 12 (S)	12 x 16 (M)	16 x 20 (L)	20 x 24 (XL)
25 lb x 0.005 lb	✓	-	-	-
50 lb x 0.01 lb	✓	✓	✓	-
100 lb x 0.02 lb	✓	✓	✓	-
250 lb x 0.05 lb	✓	✓	✓	-
400 lb x 0.1 lb	-	-	✓	-
1000 lb x 0.2 lb	-	-	-	✓

• Options for customization of capacity, resolution and base available



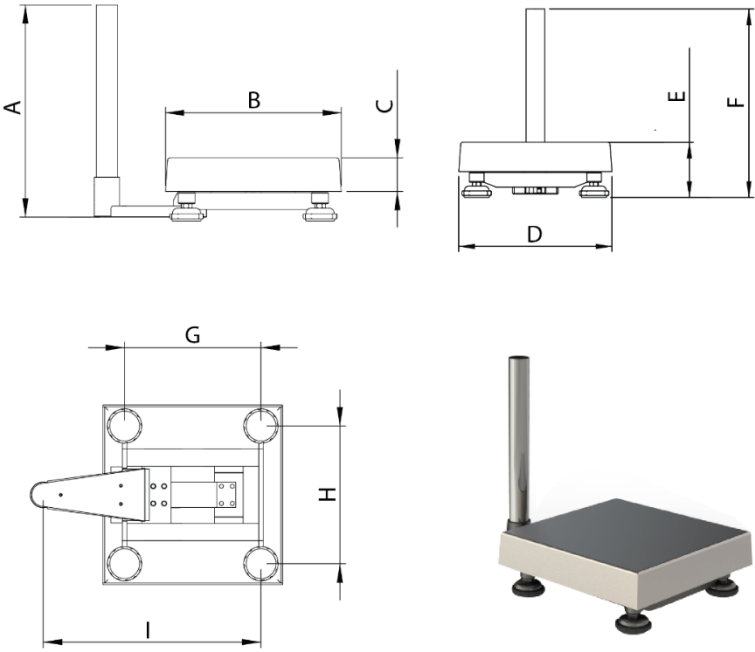

### Smart Weighing

- Flexible factory fit mounting options:
  - Options for post in either short, long or no post for wall mounting
  - Front mounting on C3 and R3
- Flexible firmware for enhanced functionality for more complex applications:
  - Setpoints
  - Advanced animal weighing

*...now that's smart weighing*



## Specifications

XG Scale Base				
Approval	NTEP: 19-147			
Frame/ Pan/ Feet Composition	304 Stainless Steel			
Load Cell Composition	IP65, Aluminium (optional Stainless Steel)			
Repeatability	+/- 1 division			
Linearity	+/- 1 division			
Dimensions				
				
				
Dimension	12 x 12 (S)	12 x 16 (M)	16 x 20 (L)	20 x 24 (XL)
	Inch	Inch	Inch	Inch
A*	14.80	14.80	26.61	26.61
B	11.71	15.65	19.58	23.52
C	2.37	2.37	2.37	2.95
D	11.71	11.71	15.65	19.58
E**	4.46 – 4.66	4.42 – 4.62	4.58 – 4.78	5.37 - 5.96
F**	15.09 – 15.29	15.08 – 15.28	26.90 – 27.10	26.9 – 27.49
G	9.45	13.38	17.32	21.26
H	9.45	9.45	13.38	17.32
I	13.32	17.25	21.19	25.11
<p>*Scales can be supplied with either no post, short post, long post or front mount.  ** The minimum and maximum height depending on the feet adjustment.</p>				