

XG-Scale



**rinstrum**  
SMART WEIGHING SOLUTIONS



## XG Bench Scales

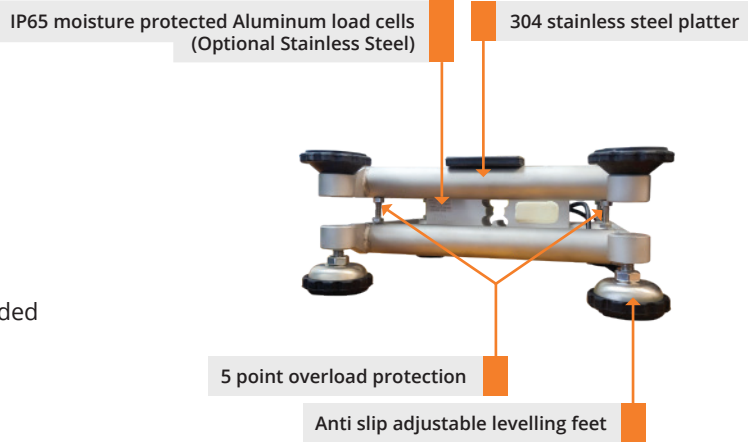
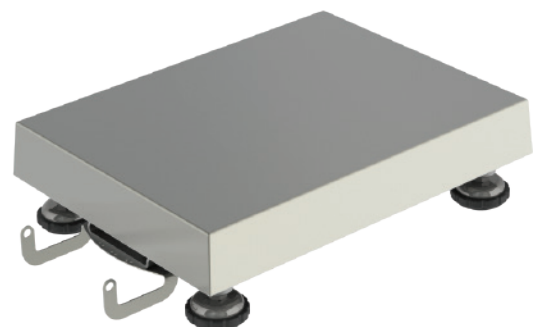
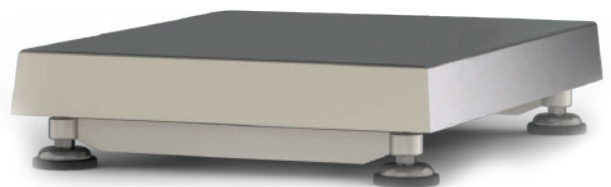
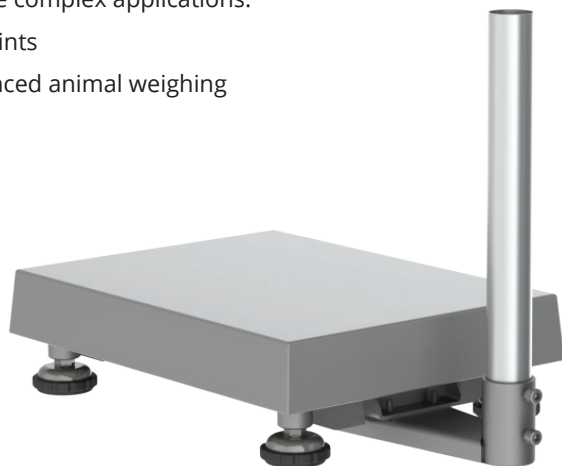
- NTEP approved – 19-147
- 304 stainless steel platter and frame assembly
- Anti slip adjustable levelling feet
- 1.5in 304 stainless tubal pole or SS front bracket option
- IP65 moisture protected Aluminum load cells (Optional Stainless Steel)
- 5 point overload protection
- Overload recording increments every time the scale is overloaded

Rinstrum XG series are sturdy, economic industrial bench scales designed for years of rugged use. Sizes range from 12in x 12in to 20in x 24in with capacities from 25lbs to 1000lbs, and NTEP approved to 5000 div non-trade to 30,000 div for industrial applications requiring higher accuracy. The scale is available in a range of different indicator mounting options, indicators, and firmware to suit the application functionality and working environment.

Optional M12 cables allowing for fast setup and replication of saved RIS settings via a viewer, and factory calibration make this platform series excellent for drop ship customers.

## Easy maintenance & operation

- Clear open frame – easy to keep clean
- Removable low sided pan – deflect splatter and easy cleaning
- Sturdy pan construction – no warping
- 2 Axis rotating head – for best operator viewing angle
- Flexible factory fit mounting options:
  - Options for post in either short, long or no post for wall mounting
  - Front mounting on C3 and R3
- Flexible firmware for enhanced functionality for more complex applications:
  - Setpoints
  - Advanced animal weighing



Capacity x Resolution	12 x 12 (S)	12 x 16 (M)	16 x 20 (L)	20 x 24 (XL)
25 lb x 0.005 lb	✓	-	-	-
50 lb x 0.01 lb	✓	✓	✓	-
100 lb x 0.02 lb	✓	✓	✓	-
250 lb x 0.05 lb	✓	✓	✓	-
400 lb x 0.1 lb	-	-	✓	-
1000 lb x 0.2 lb	-	-	-	✓

• Options for customization of capacity, resolution and base available

## C3 Series Indicators

- Independently sealed keypad with mechanical key switches
- Gravity compensation
- 9 colour configurable RGB backlight for multi-band check weighing and indication



Firmware (K301)		C320-G3	C350	C357
Weighing Units		kg, g, t, lb, oz, TN, lb:oz		
Application Modes		Weighing, auto-tare, accumulation, parts counting, check weighing		
Comms Interface		Optional RS232, RS485, 20mA, 4-20mA / 0-10V		
Calibration		Quick, Zero, Span/ 10 point linearisation, gravimetric compensation options		
Accessories		M6201 RS232 card M6203 RS485 card		
Display		RGB Backlit LCD with six 20mm (0.8") high digits with units and annunciators, 9 segment	RGB Backlit LCD with six 50.8mm (2") high digits with units and annunciators, 9 segment	
Case Materials		Resin Alloy	Resin Alloy	Stainless Steel
AC 110-240 VAC		Barrel connector with plug pack	Cable gland with AC line cord	Potted AC Line Cord
DC	5-24 VDC		Cable gland without cord	3 pin LTW connector
	Battery	4 x AA batteries	-	-
IP Rating			IP66, IP68, NEMA4	IP66, IP68, IP69K, NEMA 4X

\* Other firmware available depending on what functionality is required

## X320 Indicator

- Tough enclosure – Impact resistant composite alloy housing
- IP68 and IP69K rated
- AC/DC/Battery Power Options
- 3 band check weighing



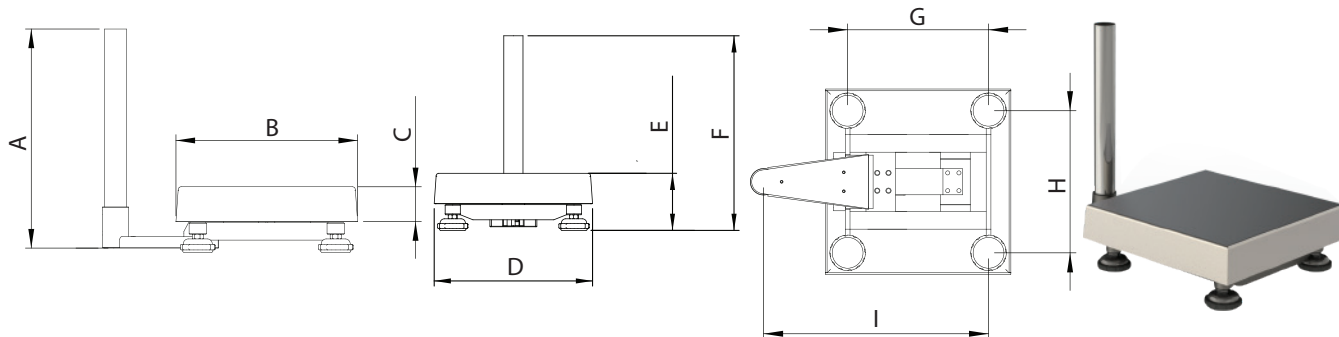
Firmware (K376)	
Weighing Units	lb, oz, kg, g, t
Application Modes	Weighing, auto-tare, accumulation, parts counting, check weighing
Check Weigh Indication	3 color LEDs, optional light tower
Comms Interface	RS232 included
Calibration	Quick, Zero, Span, gravimetric compensation options
Construction	
Material	IP69k certified composite alloy
Display	LED backlit LCD with six 20mm high digits with units and annunciators
Keyboard	Touch capacitive with no moving parts
Power	120/240VAC, wide range DC, or battery / rechargeable factory options

## Specifications

### XG Scale Base

Approval	NTEP: 19-147
Frame/ Pan/ Feet Composition	304 Stainless Steel
Load Cell Composition	IP65, Aluminium (optional Stainless Steel)
Repeatability	+/- 1 division
Linearity	+/- 1 division

### Dimensions



Dimension	12 x 12 (S) Inch	12 x 16 (M) Inch	16 x 20 (L) Inch	20 x 24 (XL) Inch
A*	14.80	14.80	26.61	26.61
B	11.71	15.65	19.58	23.52
C	2.37	2.37	2.37	2.95
D	11.71	11.71	15.65	19.58
E**	4.46 - 4.66	4.42 - 4.62	4.58 - 4.78	5.37 - 5.96
F**	15.09 - 15.29	15.08 - 15.28	26.90 - 27.10	26.9 - 27.49
G	9.45	13.38	17.32	21.26
H	9.45	9.45	13.38	17.32
I	13.32	17.25	21.19	25.11

\*Scales can be supplied with either no post, short post, long post or front mount.  
 \*\* The minimum and maximum height depending on the feet adjustment.



Local Dealer



Contact Us