

XG-Scale



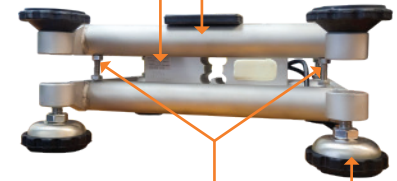
rinstrum
SMART WEIGHING SOLUTIONS



XG Bench Scales

- NMI Approved – 6/4C/256/ & Certificate 2450 (New Zealand)
- 304 stainless steel platter and frame assembly
- Anti slip adjustable levelling feet
- 36-38mm 304 stainless tubal pole or SS front bracket option
- IP65 moisture protected Aluminium load cells
- 5 point overload protection
- Overload recording increments every time the scale is overloaded

IP65 moisture protected Aluminium load cells (Optional Stainless Steel) 304 stainless steel platter



5 point overload protection

Anti slip adjustable levelling feet

Rinstrum XG series are sturdy, economic industrial bench scales designed for years of rugged use. Sizes range from 300mm x 300mm to 500mm x 600mm with capacities from 15kg single range or 6kg in multirange to 300kg in approved versions and up to 500kg in non-trade custom versions. The scale is available in a range of different indicator mounting options, indicators, and firmware to suit the application functionality and working environment.

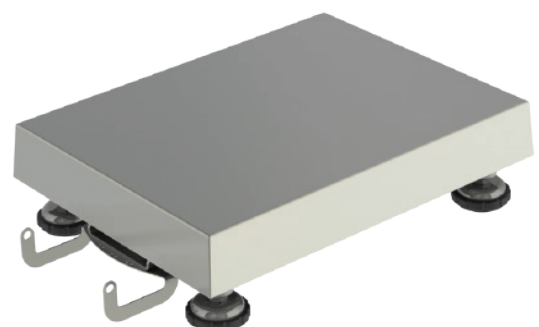
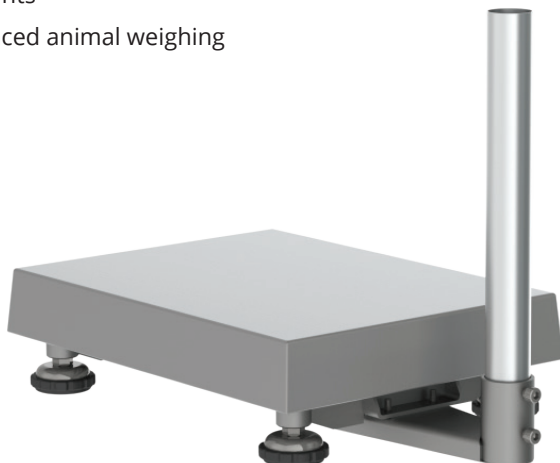
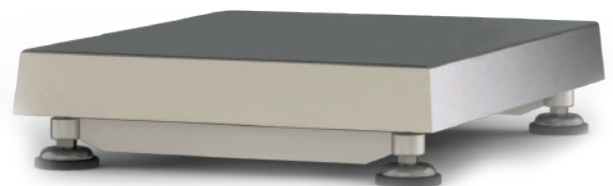
Optional M12 cables allowing for fast setup and replication of saved RIS settings via a viewer, and factory calibration make this platform series excellent for drop ship customers.

Capacity x Resolution	300 x 300 (S)	300 x 400 (M)	400 x 500 (L)	500 x 600 (XL)
15 kg x 0.005 kg	✓	✓	-	-
30 kg x 0.01 kg	✓	✓	✓	-
60 kg x 0.02 kg	✓	✓	✓	✓
150 kg x 0.05 kg	✓	✓	✓	✓
300 kg x 0.1 kg	-	-	✓	✓

• Options for customisation of capacity, resolution and base available.

Easy maintenance & operation

- Clear open frame – easy to keep clean
- Removable low sided pan – deflect splatter and easy cleaning
- Sturdy pan construction – no warping
- 2 Axis rotating head – for best operator viewing angle
- Flexible factory fit mounting options:
 - Options for post in either short, long or no post for wall mounting
 - Front mounting on C3 and R3
- Flexible firmware for enhanced functionality for more complex applications:
 - Setpoints
 - Advanced animal weighing



C3 Series Indicators

- Independently sealed keypad with mechanical key switches
- Gravity compensation
- 9 colour configurable RGB backlight for multi-band check weighing and indication
- Note: C350 and C357 available on request.



Firmware (K301)		
Weighing Units	kg, g, t, lb, oz, TN, lb:oz	
Application Modes	Weighing, auto-tare, accumulation, parts counting, check weighing	
Comms Interface	Optional RS232, RS485, 20mA, 4-20mA / 0-10V	
Calibration	Quick, Zero, Span/ 10 point linearisation, gravimetric compensation options	
Accessories	M6201 RS232 card M6203 RS485 card	
Construction		
Display	RGB Backlit LCD with six 20mm (0.8") high digits with units and annunciators, 9 segment	
Case Materials	Resin Alloy	
DC	5-24 VDC	Barrel connector with plug pack
	Battery	4 x AA batteries

* Other firmware available depending on what functionality is required

X320 Indicator

- Tough enclosure – Impact resistant composite alloy housing
- IP68 and IP69K rated
- AC/DC/Battery Power Options
- 3 band check weighing



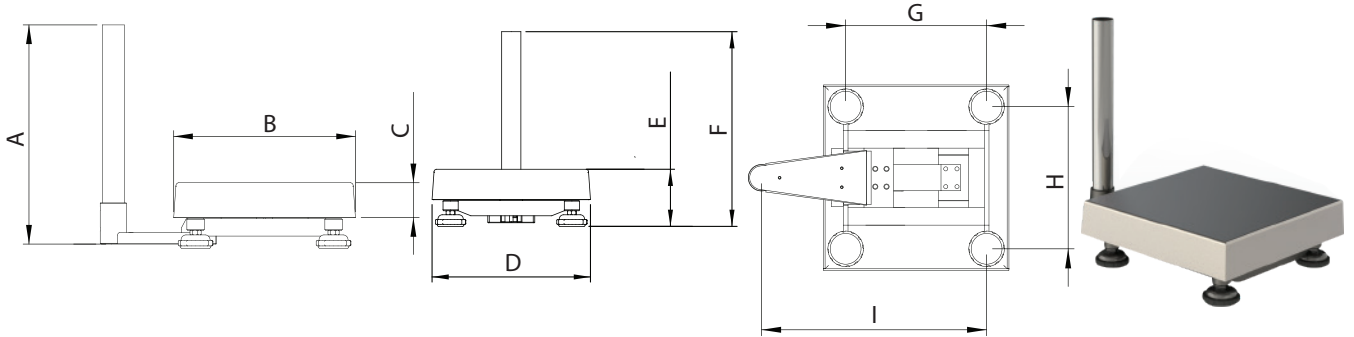
Firmware (K376)	
Weighing Units	kg, g, t, lb, oz
Application Modes	Weighing, auto-tare, accumulation, parts counting, check weighing
Check Weigh Indication	3 colour LEDs, optional light tower
Comms Interface	RS232 included
Calibration	Quick, Zero, Span, gravimetric compensation options
Construction	
Material	IP69k certified composite alloy
Display	LED backlit LCD with six 20mm high digits with units and annunciators
Keyboard	Touch capacitive with no moving parts
Power	120/240VAC, or battery / rechargeable factory options

Specifications

XG Scale Base

Load Cell Composition	IP65, Aluminium (optional Stainless Steel)
Approval	NMI: 6/4C/256 Certificate 2450 (New Zealand)
Frame/ Pan/ Feet Composition	304 Stainless Steel
Repeatability	+/- 1 division
Linearity	+/- 1 division

Dimensions



Dimension	300 x 300 (S) mm	300 x 400 (M) mm	400 x 500 (L) mm	500 x 600 (XL) mm
A*	376	376	676	676
B	297.5	397.5	497.5	597.5
C	60.3	60.3	60.3	75
D	297.5	297.5	397.5	497.5
E**	113.5 - 118.5	112.5 - 117.5	116.5 - 121.5	136.5 - 151.5
F**	383.5 - 388.5	383.5 - 388.5	683.5 - 688.5	683.5 - 698.5
G	240	340	440	540
H	240	240	340	440
I	338.4	438.4	538.4	637.9

*Scales can be supplied with either no post, short post, long post or front mount.
 ** The minimum and maximum height depending on the feet adjustment.



Local Dealer



Contact Us