

XG Series Scales – Data Sheet



- NMI Approved – 6/4C/256/ & Certificate 2450 (New Zealand)
- 304 stainless steel platter and frame assembly
- Anti slip adjustable levelling feet
- 36-38mm 304 stainless tubal pole or SS front bracket option
- IP65 moisture protected Aluminium load cells
- 5 point overload protection
- Overload recording increments every time the scale is overloaded

Rinstrum XG series are sturdy, economic industrial bench scales designed for years of rugged use. Sizes range from 300mm x 300mm to 500mm x 600mm with capacities from 15kg single range or 6kg in multirange to 300kg in approved versions and up to 500kg in non-trade custom versions. The scale is available in a range of different indicator mounting options, indicators, and firmware to suit the application functionality and working environment.

Optional M12 cables allowing for fast setup and replication of saved RIS settings via a viewer, and factory calibration make this platform series excellent for drop ship customers.

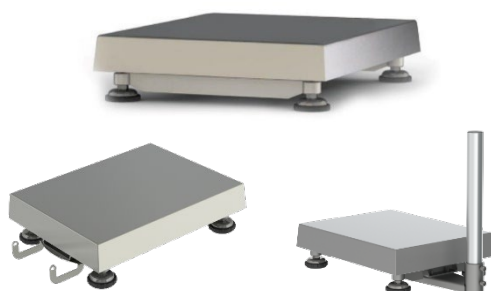
Easy maintenance & operation

- Clear open frame – easy to keep clean
- Removable low sided pan – deflect splatter and easy cleaning
- Sturdy pan construction – no warping
- 2 Axis rotating head – for best operator viewing angle

Capacity x Resolution	300 x 300 (S)	300 x 400 (M)	400 x 500 (L)	500 x 600 (XL)
15 kg x 0.005 kg	✓	✓	-	-
30 kg x 0.01 kg	✓	✓	✓	-
60 kg x 0.02 kg	✓	✓	✓	✓
150 kg x 0.05 kg	✓	✓	✓	✓
300 kg x 0.1 kg	-	-	✓	✓

- Options for customisation of capacity, resolution and base available.

Smart Weighing



- Flexible factory fit mounting options:
 - Options for post in either short, long or no post for wall mounting
 - Front mounting on C3 and R3
- Flexible firmware for enhanced functionality for more complex applications:
 - Setpoints
 - Advanced animal weighing

...now that's smart weighing

C320 Indicator



- Independently sealed keypad with mechanical key switches
- Gravity compensation

- 9 colour configurable RGB backlight for multi-band check weighing and indication



Indicator specifications

Firmware (K301)	
Weighing Units	kg, g, lb, oz, t, TN, lb:oz
Application Modes	Weighing, auto-tare, accumulation, parts counting, check weighing
Check Weigh Indication	9 colour backlight
Max resolution	60000d
Comms Interface	Optional RS232, RS485, 20mA, 4-20mA / 0-10V
Calibration	Quick, Zero, Span/ 10 point linearisation, gravimetric compensation options
Construction	
Material	IP65 composite alloy
Display	RGB backlit LCD Six 9 segment 20mm high digits with units and annunciators
Keyboard	Independently sealed 7 mechanical keys
Power	Fitted with 4AA battery boot and AC plug pack.
Accessories	M6201 RS232 card M6203 RS485 card

X320 Indicator

- Tough enclosure – Impact resistant composite alloy housing
- IP68 and IP69K rated
- AC/DC/Battery Power Options
- 3 band check weighing



Indicator specifications

Firmware (K376)	
Weighing Units	kg, g, lb, oz, t
Application Modes	Weighing, auto-tare, accumulation, parts counting, check weighing
Check Weigh Indication	3 colour LEDs, optional light tower
NMI certified	4000d
Max resolution	60000d
Comms Interface	RS232 included
Calibration	Quick, Zero, Span, gravimetric compensation options
Construction	
Material	IP69k certified composite alloy
Display	LED backlit LCD with six 20mm high digits with units and annunciators
Keyboard	Touch capacitive with no moving parts
Power	120/240VAC, wide range DC, or battery / rechargeable factory options

R320 Indicator

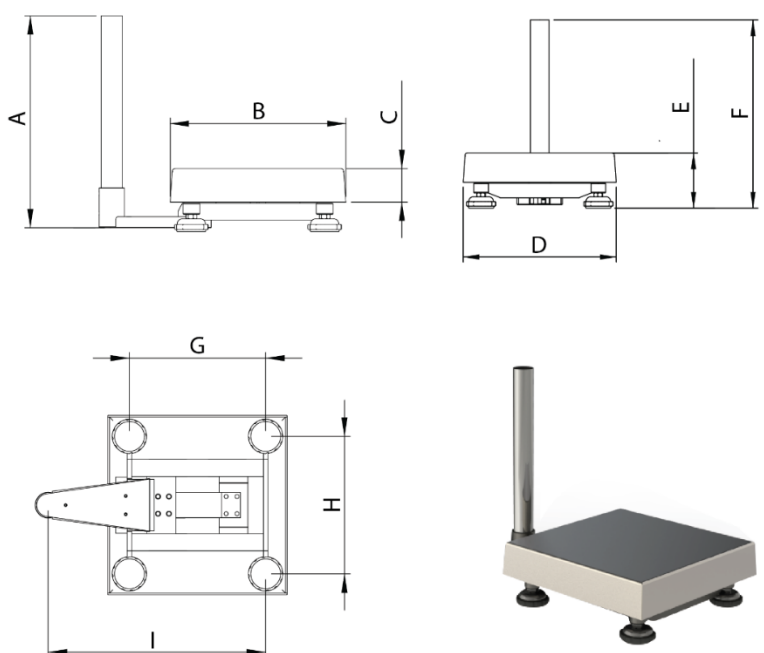

- ABS Housing with silicon keys
- Low-cost option weight display only
- Clock calendar, printing available depending on firmware



Indicator specifications

Firmware (K342)	
Weighing Units	kg, g, lb, oz, t
Application Modes	Weighing, auto-tare, accumulation, parts counting options
NMI certified	4000d
Max resolution	60000d
Comms Interface	RS232 Option
Calibration	Quick, Zero, Span, gravimetric compensation options
Construction	
Material	IP65 ABS
Display	LED backlit LCD with six 20mm high digits with units and annunciators
Keyboard	Independently sealed conductive rubberized.
Power	Fitted with 4AA battery boot and AC plug pack. (option for rechargeable battery)

XG Scales Specifications

XG Scale Base				
Load Cell Composition	IP65, Aluminium (optional Stainless Steel)			
Approval	NMI: 6/4C/256 Certificate 2450 (New Zealand)			
Frame/ Pan/ Feet Composition	304 Stainless Steel			
Repeatability	+/- 1 division			
Linearity	+/- 1 division			
Dimensions				
				
				
Dimension	300 x 300 (S)	300 x 400 (M)	400 x 500 (L)	500 x 600 (XL)
	mm	mm	mm	mm
A*	378	378	378	678
B	313	413	513	613
C	60	60	60	75
D	313	313	413	513
E	113	113	116	151
F	385	385	385	685
G	240	338	438	540
H	240	240	340	440
I	375	473	573	676
*Scales can be supplied with either no post, short post, long post or front mount.				