

C527



**rinstrum**  
SMART WEIGHING SOLUTIONS



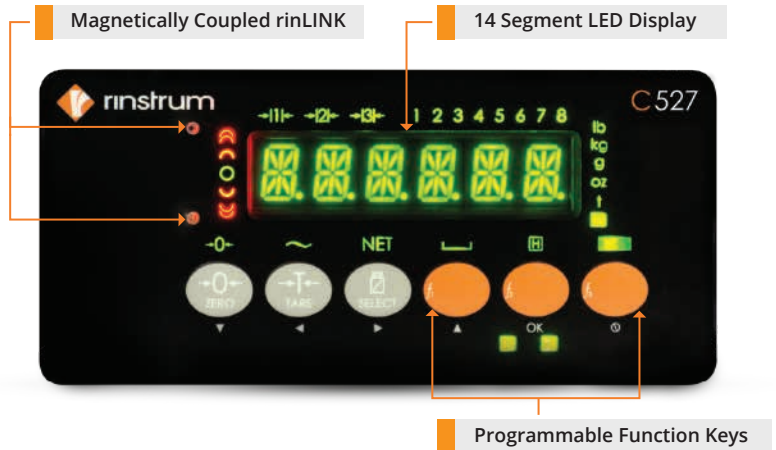
## Rinstrum C527 Stainless Steel Indicators

C500 Series is Rinstrum's latest industrial process controller equipped with modern interfaces and increased accuracy. The C500 Series is the culmination of 25 years of innovative weighing controller design, bringing together the best of our R400 and 5000 Series.

The C527 is IP65 rated waterproof stainless-steel housing unit with all C500 series weighing capabilities. It comes with wall, desk and pole mounting options and is available as either a factory fit AC or DC version.

### Features

- Built in USB and Ethernet connections.
- 10,000d @ 0.5 uV/d
- 16 x 350Ω load cells
- IP65-rated stainless steel housing
- Wall, Desk & Pole mounting options
- 8 set points (option)
- AC and DC versions
- Embedded web server
- Ethernet and USB host and slave standard
- Lua programmable option
- MODBUS TCP/IP, ASCII, RTU



### Firmware Versions

#### C500-K501

- C500 series Main weighing application

#### L900-500

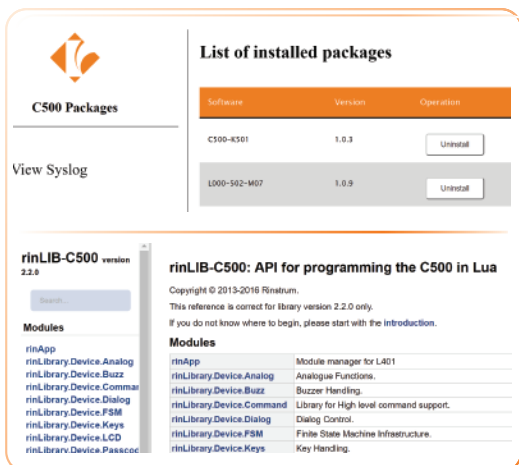
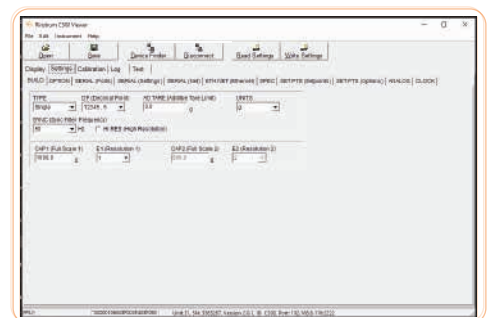
- Rinstrum C500 Licensed Developer Package allows telnet and FTP connections to the indicator to permit Lua development.

#### L900-501

- Ethernet/IP provides access to the indicator via the Ethernet/IP industrial protocol.

### Superior diagnostics and support

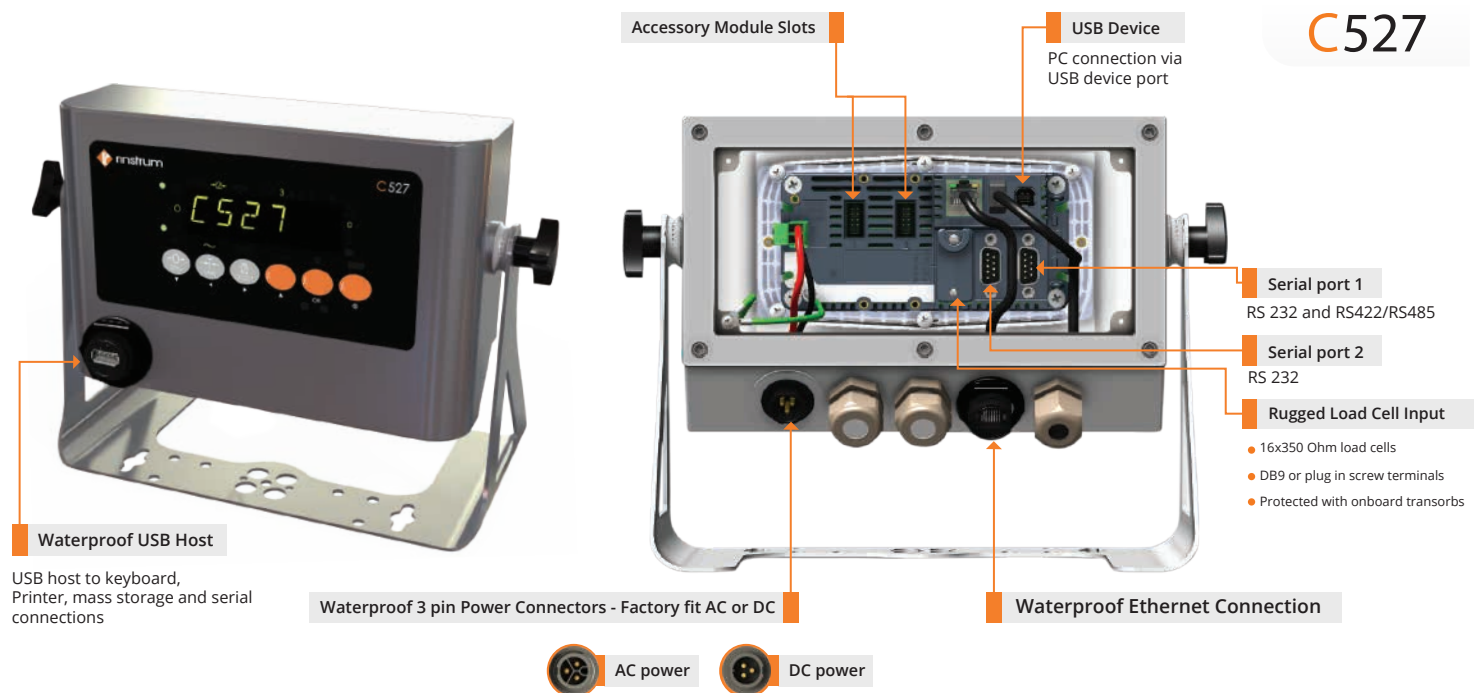
- Range of diagnostic tools and features
- Force Output and Test Input functions
- Allow the installer to specifically test I/O to assist in site setup
- Ability to swap modules in and out without recalibration of the indicator



### Lua Programmability



- Built in embedded Lua scripting.
- Enhance the functionality by installing a range of application packages.
- Open source library and comprehensive API enable you to write your own applications or engage Rinstrum to write them for you through our fixed price Lua MAX programme.
- Use the embedded web server to create browser based user interfaces.



## Rugged Load Cell Input

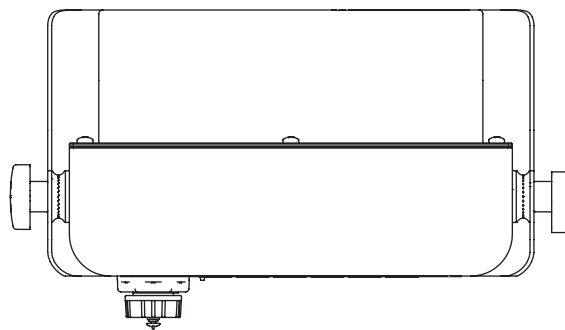
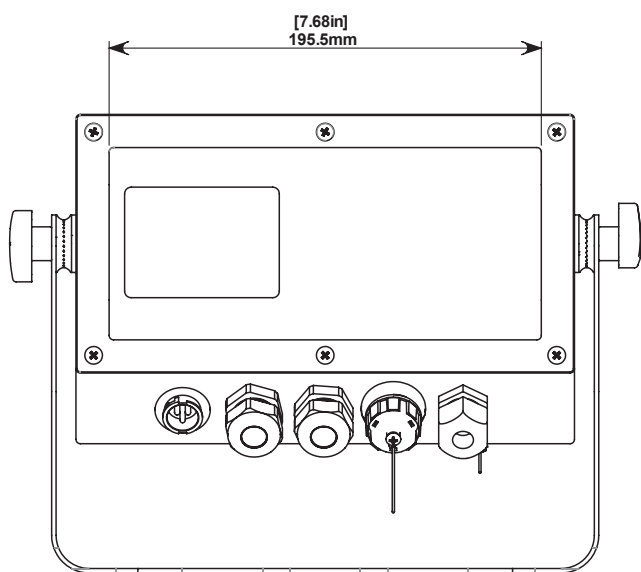
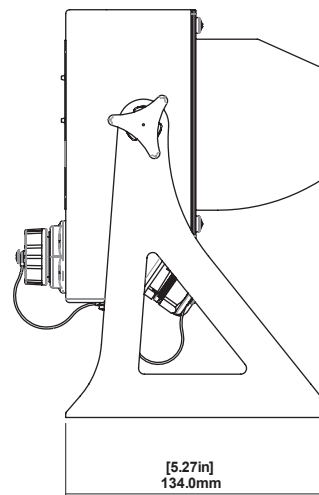
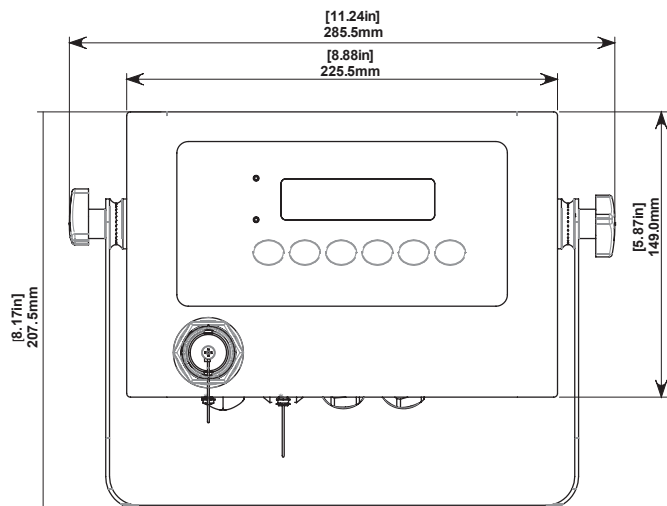
Designed to take 16x350 ohm load cells @0.25uV/D; providing flexibility and reducing the need for summing hardware, simplifying the installation and saving money. The load cell input is protected with onboard transorbs to limit damage from external voltage surges.

## rinLINK for establishing a temporary connection to a PC

The rinLINK provides an isolated optical serial connection directly on the front of the indicator. It is magnetically coupled for easy access in situ for updates/setup of the indicator, saving the installer time and effort.

## Full Range of Module Accessories





## AUSTRALIA

Rinstrum Pty Ltd  
41 Success Street  
Acacia Ridge 4110  
Australia

Ph: +61 7 3216 7166  
Fax: +61 7 3216 6211  
Email: sales@rinstrum.com

## USA

Rinstrum Inc  
1349 Piedmont Drive  
Troy, Michigan 48083  
United States

Toll Free 1 877 829 9152  
Ph: +1 248 680 0320  
Fax: +1 248 499 1331  
Email: sales.usa@rinstrum.com

## EUROPE

Rinstrum Europe GmbH  
Hans-Böckler-Straße 42  
D-40764 Langenfeld  
Germany

Ph: +49 (0)2173 165162-10  
Fax: +49 (0)2173 165162-29  
Email: sales.eu@rinstrum.com