

## CLCR Caster Load Cell - Data Sheet



- Designed for mobile tanks, vessels and reactors
- Hermetically sealed IP68 / IP69 Rated
- Triple Beam load cell design
- Top and bottom mounting plates
- Glass to metal water block header at cable entry
- PH17-4 Stainless Steel
- Excellent overload and side load protection
- mV/V/OHM calibrated for excellent corner balancing
- Safe overload capacity 200% Full Scale
- Non-Repeatability Less than 0.01% F.S.
- Combined Error less than 0.05%

The new Mobile Process Weighing System allows you to accurately weigh and batch in portable tanks or vessels to speed up production time, improve safety, and to minimize bacteria collection points found in traditional floor scales. This system consists of special load cells that simply bolt between the tank leg and the standard swivel casters already on the vessel, utilizing the standard 6-inch caster bolt pattern with no modifications to the tank needed. The secret is the “moment corrected” technology inside the load cells that compensates for the inherent pinching action of the swivel casters and provides accurate weighments even on floors that are not level. Accuracy of +/- 0.1% when properly installed and used on a level floor. These load cells may be used with a variety of different weighing indicators depending upon the application and data collection requirements. This disruptive and proven technology is used globally with hundreds of installations in multiple industries such as,

- Aerospace & Aviation
- Chemical & Petrochemical
- Food & Beverage
- Manufacturing
- Medical & Pharmaceutical
- Plastics & Polymers

### - **Technology**

“Moments Correction” compensate for pinching action from swivel casters for more accuracy.

Accurate to +/-0.5 kgs while being moved even on unlevel floors.

### - **Efficiency**

Reduce mix/weigh cycle time up to 35%.

Eliminate individual weighments on static scales.

### - **Design**


No modifications needed – bolts directly between tank leg and caster using standard 6-inch caster bolt pattern.

Remove bacteria collection points found on traditional floor or pit mounted scales.

### - **Safety**

Eliminate operator injuries due to moving heavy tanks up and down floor scale ramps.

Remove trip hazards found on traditional floor scales.



### Smart Weighing

**Fix without any modification to the hole pattern**

- Standard 6-inch caster wheel pattern.
- Bolts directly between tank leg and caster using standard 6-inch caster bolt pattern.

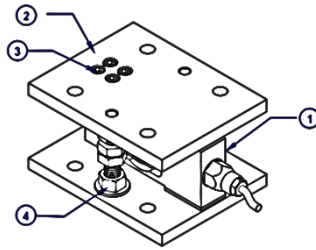
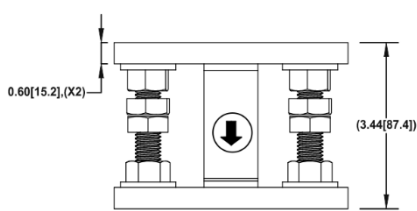
now that's smart weighing...

### CLCR Caster Load Cell Specification Table

MODEL LTB1-B02			
P/N		LTB1-B02-0250	LTB1-B02-0500
Capacity	Kg	250	500
Full Scale Output (FS)	mV/V	1.3 ± 0.1%	
Combined Error	%FS	≤ ± 0.05	
Non-Linearity	%FS	≤ ± 0.03	
Hysteresis	%FS	≤ ± 0.03	
Creep @ 30 Min	%FS	≤ ± 0.03	
Non-Repeatability	%FS	≤ ± 0.01	
Zero Balance	%FS	≤ ± 1	
<b>OCLS</b>			
Max Platform Size	mm	600 x 600	
Max Off-center Distance	mm	212	
OCLS Error @ 1/3 of E <sub>max</sub>	%FS	≤ ± 0.05	
<b>Temperature Effect</b>			
Output	%FS/10°C	≤ ± 0.01	
Zero	%FS/10°C	≤ ± 0.014	
<b>Temperature Range</b>			
Compensated	°C	-10 ~ +40	
Operating	°C	-40 ~ +80	
<b>Thermal Resistance</b>			
Input	Ω	386 ± 20	
Output	Ω	350 ± 5	
Excitation Voltage	VDC	5 - 15	
Insulation Resistance @ 50VDC	MΩ	≥ 5000	
Safe Overload Limit	%FS	200	
Cable length (L)	m	3 <sup>+0.1</sup> <sub>-0</sub>	
Cable Type	22 AWG 4 conductor foil shielded black cable with drain wire		
Seal Type	IP69		
Element Material	Stainless Steel		

Specifications may change at any time without notice.

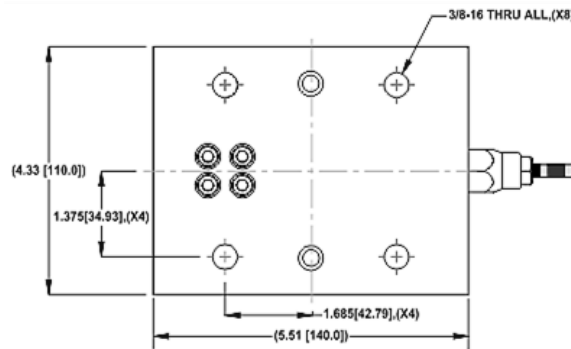
### MODEL LTB1-B02 Dimensions



ITEM NO	DESCRIPTION
1	LOAD CELL
2	MOUNTING PLATE
3	1/4-28 BOLT (MC)
4	M12X1.75 NUT

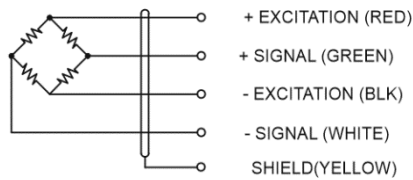
\*All Dimensions in inch[mm]

### Mounting Panel Dimensions



\*All Dimensions in inch[mm]

### Load Cell Connections



Specifications are subject to variation for improvement without notice. Illustrations are indications only and variation may be evident between products.