

Smart Weighing – rinLINK – easy connection



Easy laptop connection
no need to access rear of the indicator

The magnetically coupled opto-link on the front panel provides a convenient temporary connection to a laptop for:

- Transfer of setup and calibration information;
- Download of software upgrades
- PC end available as USB or serial connector;
- Supported on X300, R300 and R400 series indicators and D series remote displays.

...now that's smart weighing.

Use the Rinstrum rinLINK for a simple connection from your computer to a Rinstrum indicator

- USB or serial for simple fast connection
- The rinLINK can be used to download a new software revision or when you want to run Viewer to do indicator configuration.
- Once the Indicator has been configured, you can save the setup for use on other installations or as a backup of the current installation, before and after changes are made.
- The rinLINK can be used to update Application firmware to a later version (e.g. K401 v2.32 to V2.33) or re-flash to different Application Firmware. (e.g... Re-flash a K401 Basic Weighing Application to K410 Filling Application)

Use Rinstrum's free software tools to emulate the indicator on your computer.

View300 – for R320/R323 and X320

Allows for fast simple indicator setup via a PC.

Enter custom print strings through Viewer

View400 - Fast efficient R400 Indicator setup via PC

Allows for fast simple indicator setup via a PC. View400 displays the complete menu structure of the indicator on the PC with convenient drop down menus for setting selection.

Save400 - Reading and writing Indicator setup

Save400 is a software tool that reads and writes R400 indicator setup and configuration - this allows for a setup to be exported for update and then re-imported.

Establishing a temporary connect to a PC using a RinLINK

The rinLINK provides an optical serial connection onto the front of an indicator or remote (R400, R300, X320, D300, D640 and D740)

There are two types of rinLINKs:

- A10005 serial connector
- A10012 USB connector (provided with a CD for drivers)

When using a USB rinLINK for the first time on a PC, the driver will have to be loaded.

- The driver is located on the CD that comes with the rinLINK or on the View 300 and View400 pages in the software download section (dealer log on required).



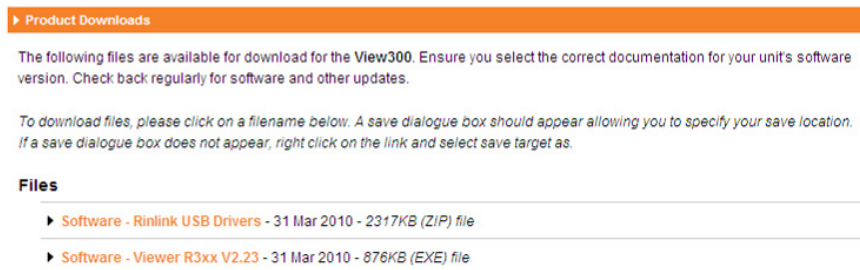
Connect the USB (or DB9) end of rinLINK to PC and optical head to unit for connection.

Using Viewer

X320	View300
R300 Series	View300
R400 Series	View400 and Save400
2100	2100 Viewer
5000	Viewer V1 Hardware/V2 Hardware
5100	5100 Viewer
5200	5200 Viewer
5230	5230 Viewer
6500 Remote	6500 Viewer
1203	1203 Viewer

1. Download Viewer Software

- Log on using Dealer Logon at www.rinstrum.com
- Select Product Page relating to the Viewer that is required – scroll to Product Downloads section



Product Downloads

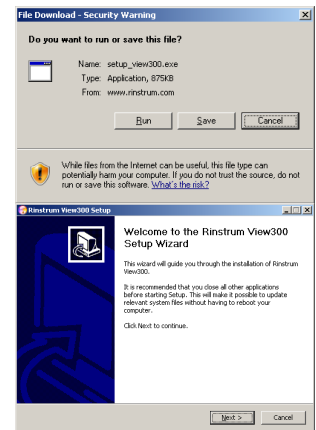
The following files are available for download for the View300. Ensure you select the correct documentation for your unit's software version. Check back regularly for software and other updates.

To download files, please click on a filename below. A save dialogue box should appear allowing you to specify your save location. If a save dialogue box does not appear, right click on the link and select save target as.

Files

- ▶ Software - Rinlink USB Drivers - 31 Mar 2010 - 2317KB (ZIP) file
- ▶ Software - Viewer R3xx V2.23 - 31 Mar 2010 - 876KB (EXE) file

- Select the Viewer Software and **run** to install on your PC, follow prompts



2. Establish PC-Unit connection

RinLINK connections for R400, R300, X320 etc.

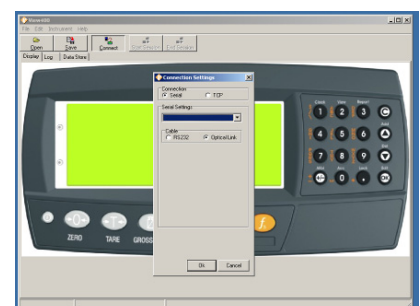
For 5000 series, 2100 series, 1203, 6500 and 2101 remote displays connect via a serial communications link to your PC - refer to reference manual for unit.



3. Run Viewer Program

Start the viewer program and press Connect.

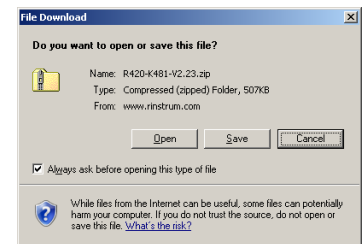
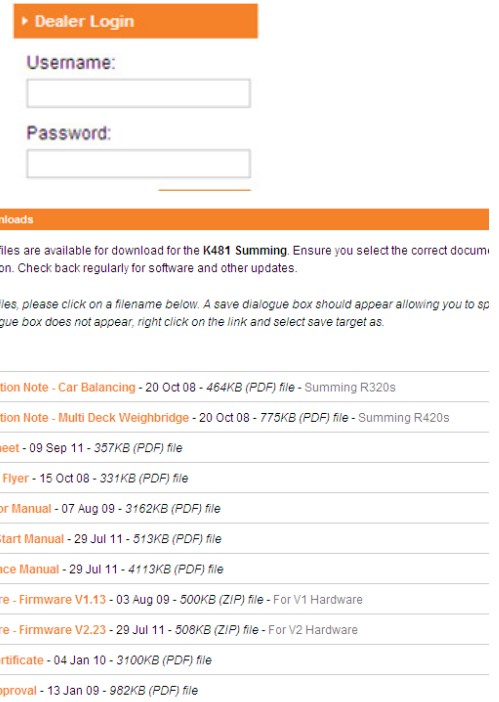
- Viewer will detect the communication ports. Click the down arrows box and select the communication port that the rinLINK is connected too.
- Click Start Session/Read settings.
- It is a good idea to save the .RIS file as a backup first before changing settings.
- The Display tab displays the indicator and allows for buttons to be clicked on the PC the same as using the keys on the indicator.



Firmware Upgrade Instructions

5. Download Application Firmware

- Log on using Dealer Logon at www.rinstrum.com
- Select Product Page
- Scroll to the bottom of the Product Page to the Product Downloads area – manuals and firmware are listed
- Select the **firmware** and **save** to your PC
- Note for R400 series
 - V1 updates can only be used on V1 hardware and V2 updates only on V2 hardware – the updates are hardware specific.
 - If you are changing to a different Application (eg K401 to K402) a license code is required that is linked to the Serial Number of the unit that is to be re-flashed. Contact Rinstrum to obtain this license code, the serial number of the unit to be upgraded will be required to generate the license code. An upgrade charge will apply if the new firmware is a higher functionality, for example K401 Single Product to K402 Multi-product. K402 to K410 has no charge but still requires a licence code.
 - If you have purchased an upgrade kit then the Application Firmware is on the CD along with the license code – check that the indicator serial number matches the upgrade kit serial number. If the serial numbers don't match the upgrade won't be successful.



6. Upload Application Firmware to Indicator or Remote

- Ensure that the unit is ON.
- Establish unit to computer connection (either rinLINK or serial connection)
- *Recommended Backup - Using Viewer or Save400 (for the R400 Series) download a backup of the unit's current settings to reload after a version only update.*
 - *Note: To backup current settings tick the 'Entire Menu' tick box in the Viewer when reading the 'Full Setup Menu', otherwise only menu sub trees that are opened will be saved by the Save Button. Alternatively expand each submenu individually to be saved.*
- Run the executable (.exe) file for the firmware to be uploaded.
- Follow the prompts to upload the new firmware to the unit.
- *Recommended Default - Default the unit using USER.DEF (User Default in GEN_OPT) and DEF.CAL (Default Calibration in SCAL_CAL) after changing to a new Application*
 - *For R400 Series to fully default including the Product database use Save400.*
- **Different Application (e.g. K401 to K402)**
 - *If changing to a new Application the indicator will restart automatically and prompt for the license code (Rinstrum provided dependent on serial number) for the new firmware.*
 - *Enter the license code and press OK*